

# RM

READING  
MUSEUM

# READING MUSEUM QUICK GUIDE

A short guided walk



# WELCOME TO READING MUSEUM

The Museum has three floors. There are lots of objects to see.

This guide shows you some of the objects.

You can use the lift or the stairs.

There are toilets on the ground floor near the entrance and on the second floor.

Please ask a member of staff if you need help.

## GROUND FLOOR WELCOME GALLERY

The Welcome Gallery has objects from around the world. This gallery sometimes has other displays.



## STORY OF READING GALLERY

This gallery shows the history of Reading.



## FIRST FLOOR BAYEUX GALLERY

In this space there is a Victorian copy of the Bayeux Tapestry. To follow the story, start at section one. Each section is numbered. It tells the story of the Norman invasion of England in 1066.





## SECOND FLOOR SILCHESTER GALLERY

Here you will find Roman objects. These are from the nearby Roman town of Calleva Atrebatum, which is now called Silchester.

### SILCHESTER ANNEXE

There is a small gallery at the top of the stairs, the door is in the Silchester Gallery. In this gallery you will find lots of Roman pots.



## SECOND FLOOR ART GALLERY (SIR JOHN MADEJSKI GALLERY)

This gallery has exhibitions. These change regularly. Here are some images from previous exhibitions. Information about the current exhibition can be found in the gallery or on the museum website.





## SECOND FLOOR WINDOW GALLERY

The gallery has large windows. In the past this space was part of an art school. Now it has lots of interesting sculptures.

♿ There are toilets in this area, near the doors.



## SECOND FLOOR GREEN SPACE

This space is filled with natural objects. You can find out about animals that live in this country and about prehistoric life.



## HUNTLEY & PALMERS GALLERY

This gallery tells the story of the biscuit factory, which was famous in Reading. There are many biscuit tins to see.

You can walk through the corridor to the next gallery.



## ATRIUM

You will see very large mosaics and some modern pots in this space. The mosaics come from the Roman town of Calleva Atrebatum. The pots were made by Alan Caiger-Smith near Reading.

The lift is in the centre of this space.



## FINDING YOUR WAY AROUND

### The Pantry Café

There is a café in the Town Hall on the ground floor.

### Shop

The Museum shop is behind the reception desk on the ground floor.

### Toilets

There are toilets on the ground floor and on the second floor.



Lifts



Stairs



Ramp



Toilets



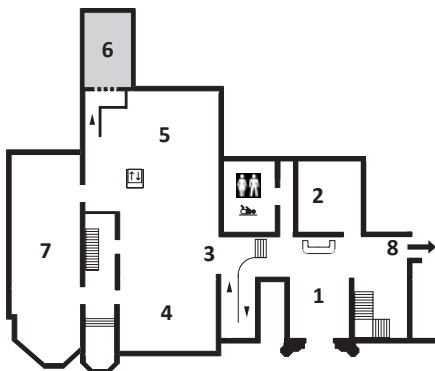
Baby Changing

[www.readingmuseum.org.uk](http://www.readingmuseum.org.uk)

Reading Museum, Town Hall,  
Blagrove Street, Reading,  
Berkshire, RG1 1QH

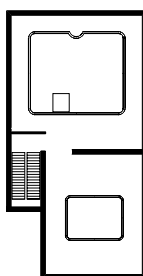
What3words:

[///racing.festivity.pink](https://www.what3words.com/racing.festivity.pink)



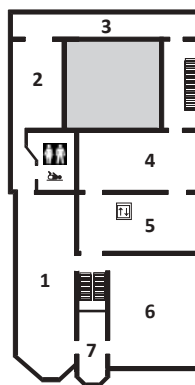
## GROUND FLOOR

- 1 Reception
- 2 Shop
- 3 Museum Entrance
- 4 Welcome Gallery
- 5 Story of Reading Gallery
- 6 Earley Charity Room (booked events only)
- 7 Ceremony Room (Reading Register Office)
- 8 To Café



## FIRST FLOOR

The Bayeux  
Tapestry Gallery



## SECOND FLOOR

- 1 Sir John Madejski Art Gallery
- 2 Window Gallery
- 3 Huntley & Palmers Gallery
- 4 Green Space
- 5 Atrium
- 6 Silchester Gallery
- 7 Silchester Annexe